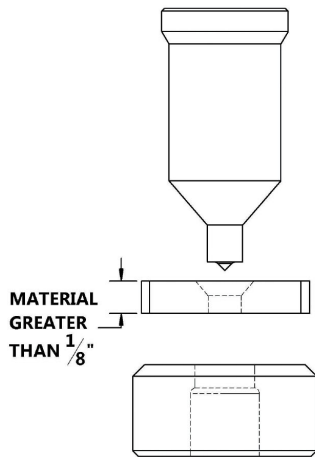
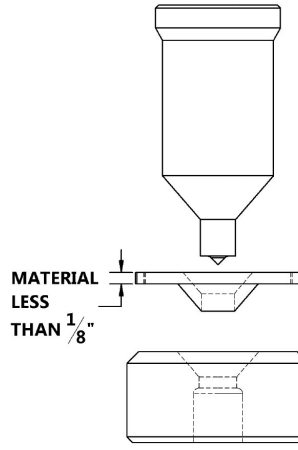
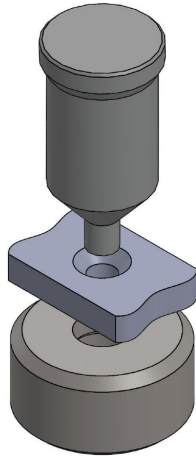


## Countersink Tools



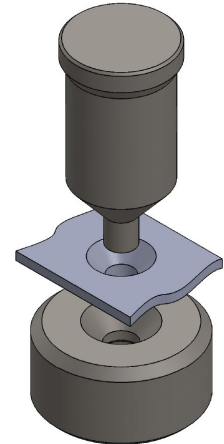
**FULL COUNTERSINK**

Material 1/8" and greater will typically not deform with countersink operation.



**COUNTERSINK & FORM**

Material under 1/8" will deform with countersink operation.



### Full Countersink

Machine Make	Machine Model	Punch Style	Die Style	Screw Size	Material Thickness

### Countersink and Form

Machine Make	Machine Model	Punch Style	Die Style	Screw Size	Material Thickness

Customer Name	Contact Name	Phone Number or Email